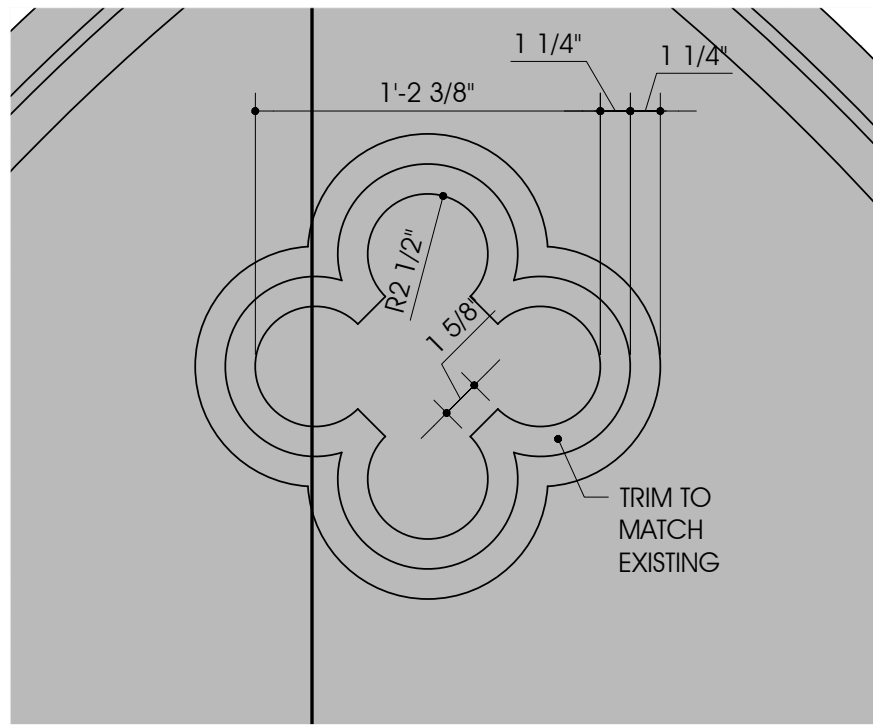
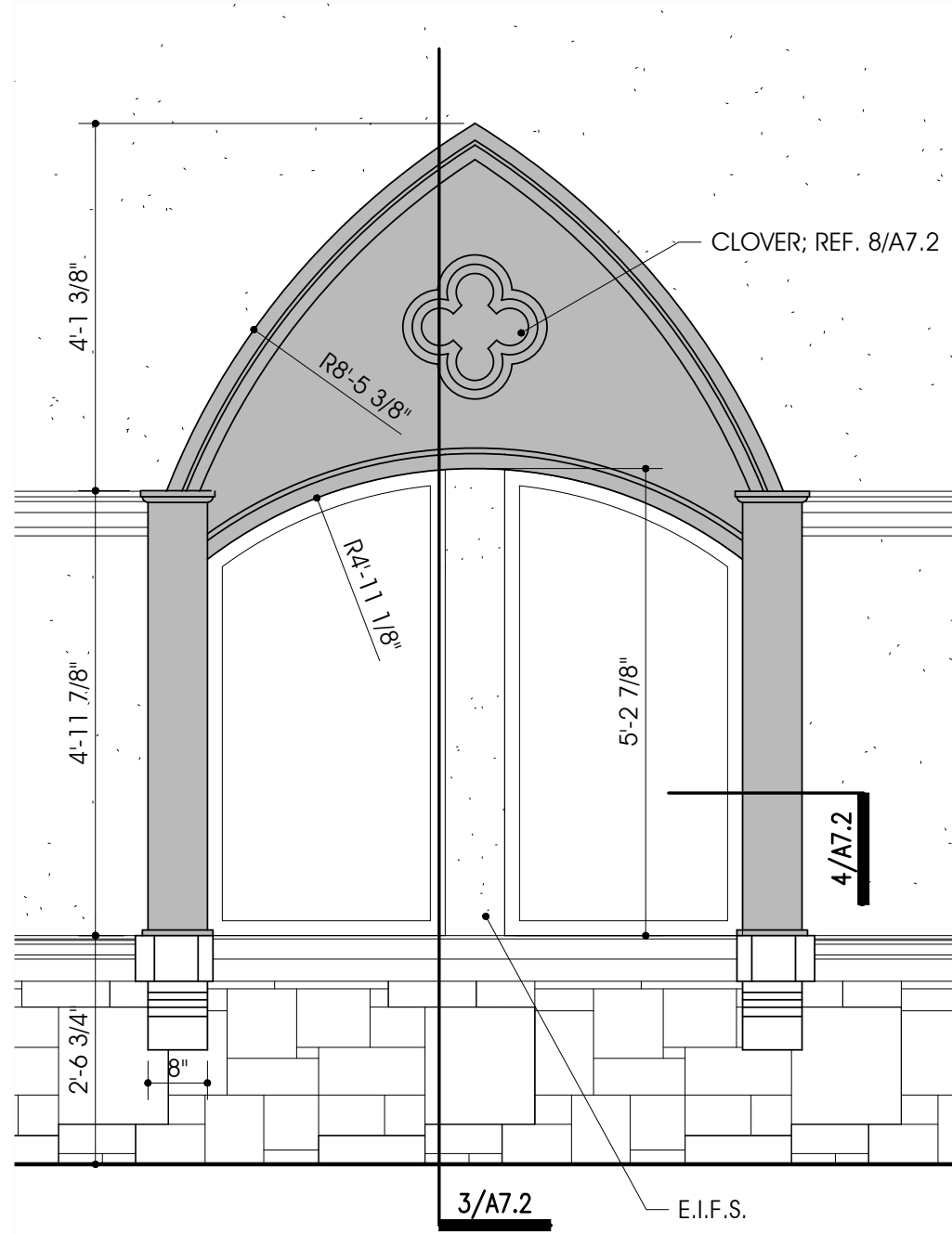




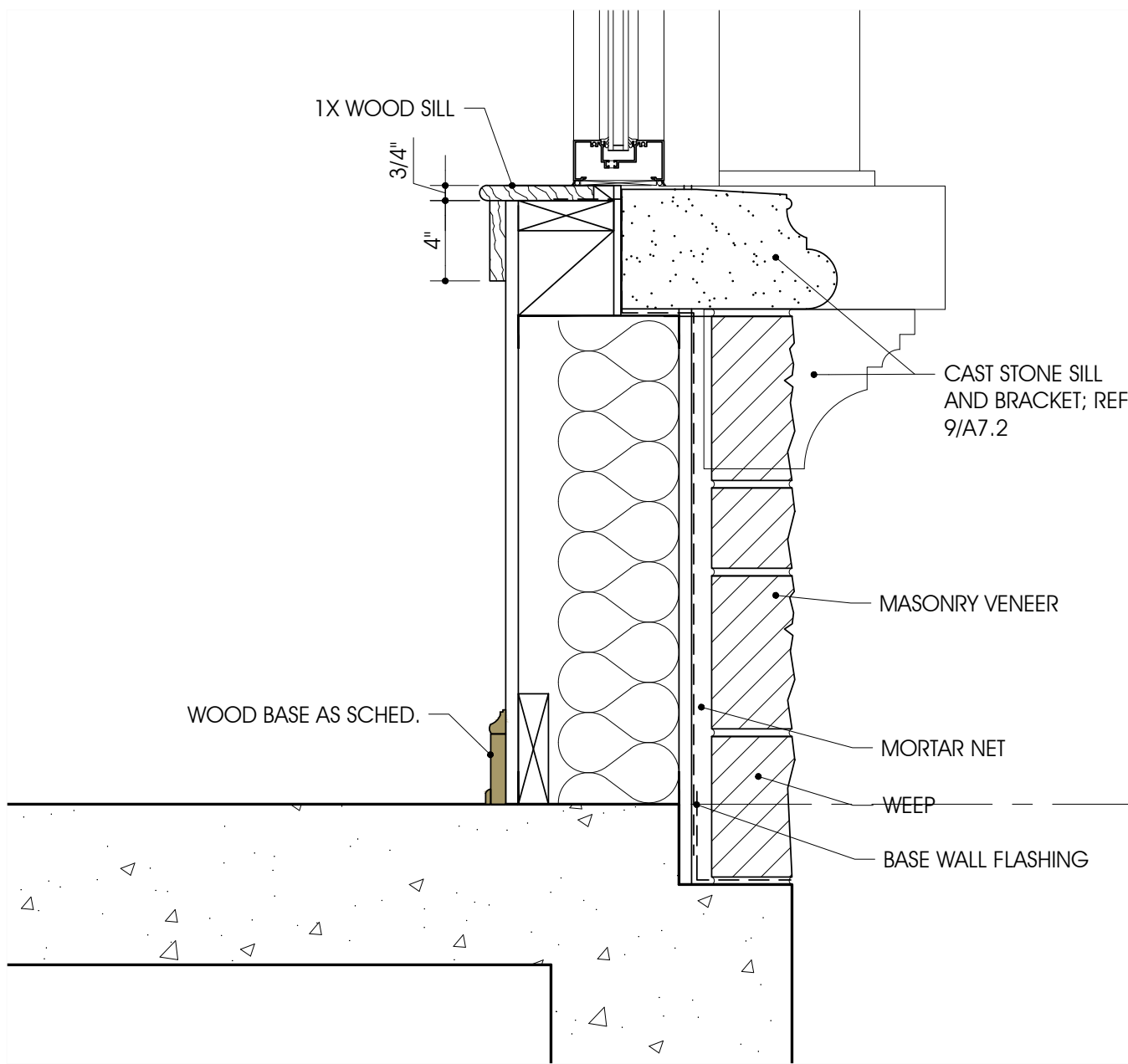
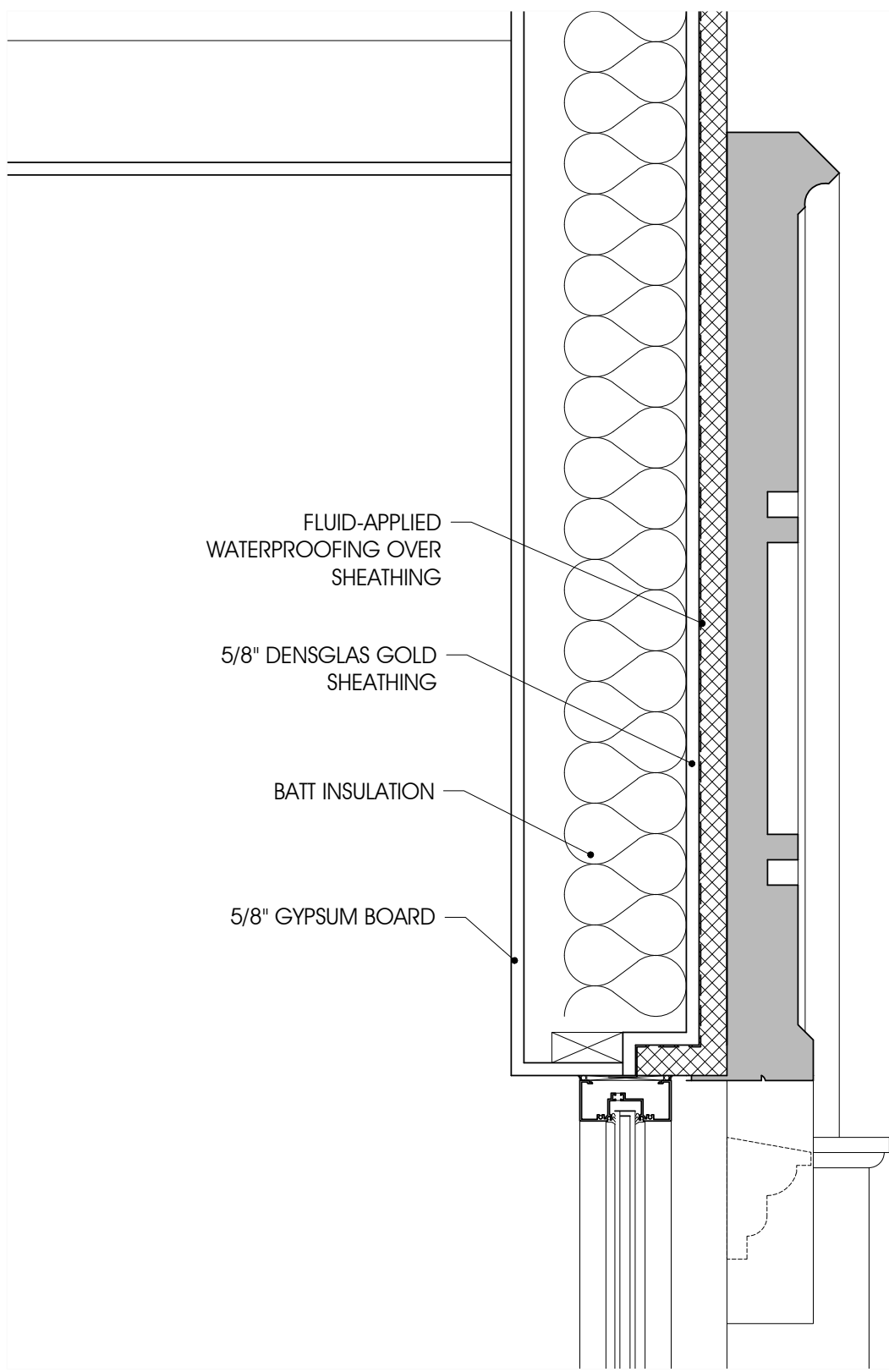
8A PHOTO - SIMILAR CONDITION
Scale: N.T.S.



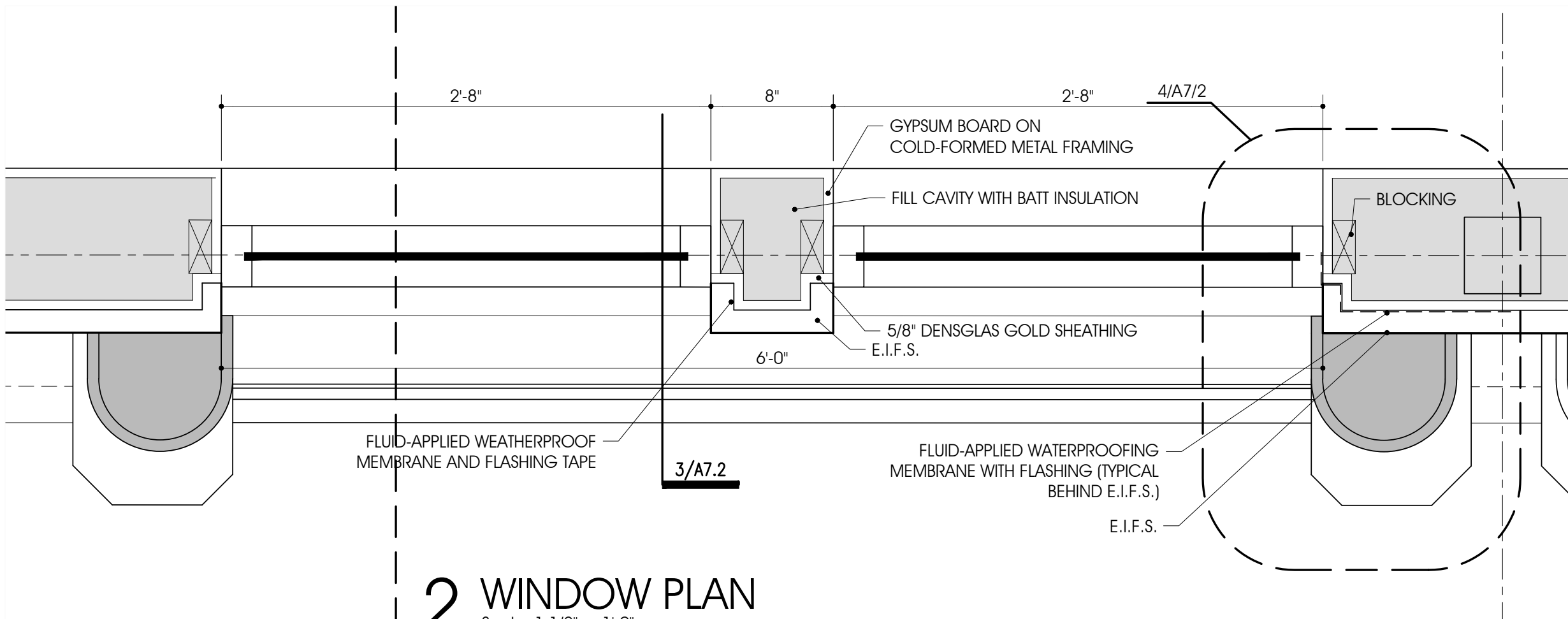
8 ENLARGED ELEVATION - CLOVER
Scale: 1 1/2" = 1'-0"



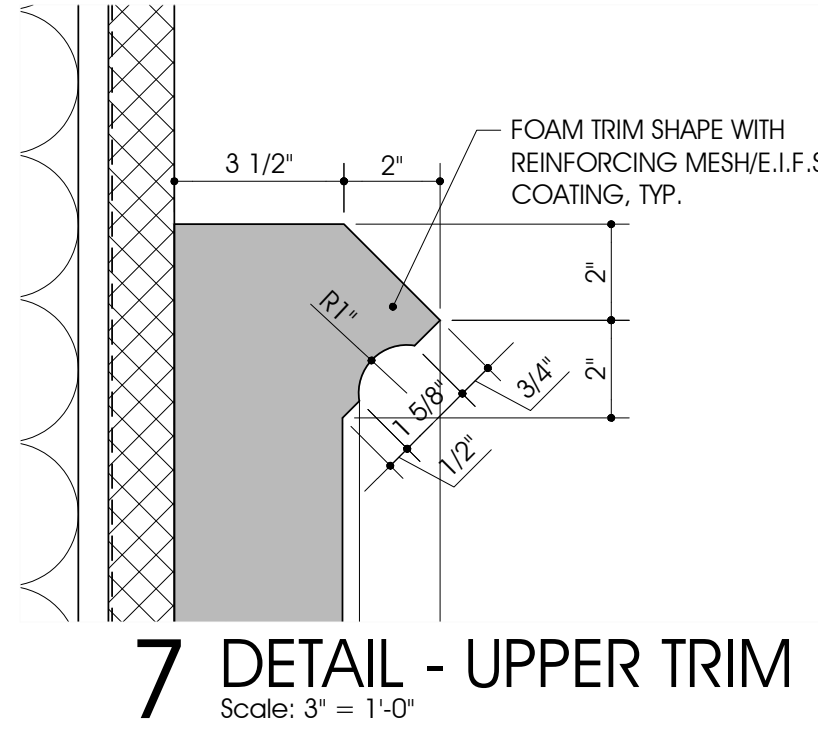
1 WINDOW ELEVATION
Scale: 1/2" = 1'-0"



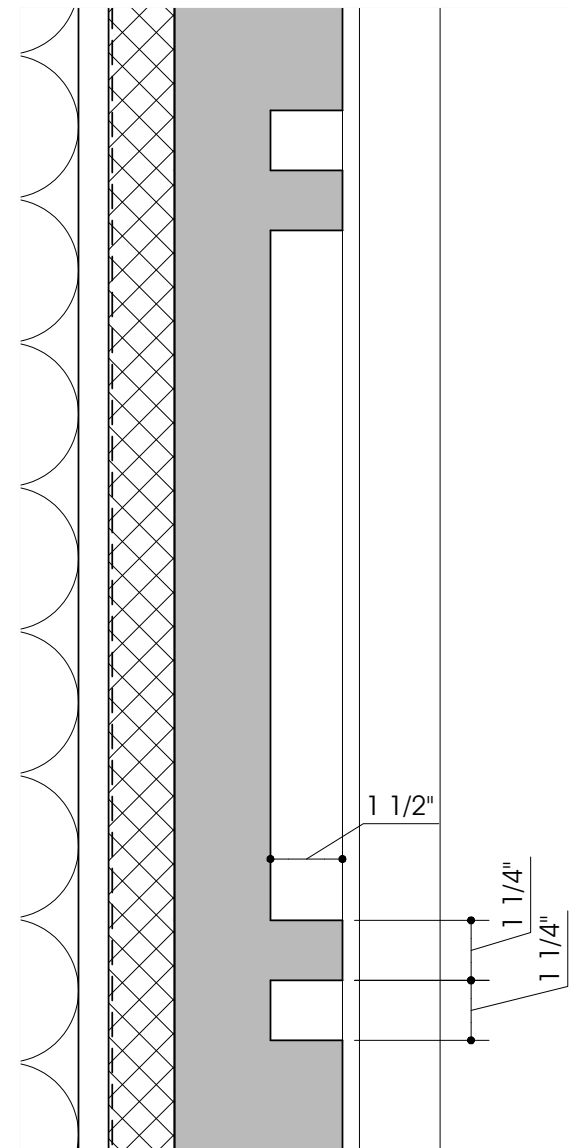
3 DECORATIVE WINDOW DETAIL
Scale: 1 1/2" = 1'-0"



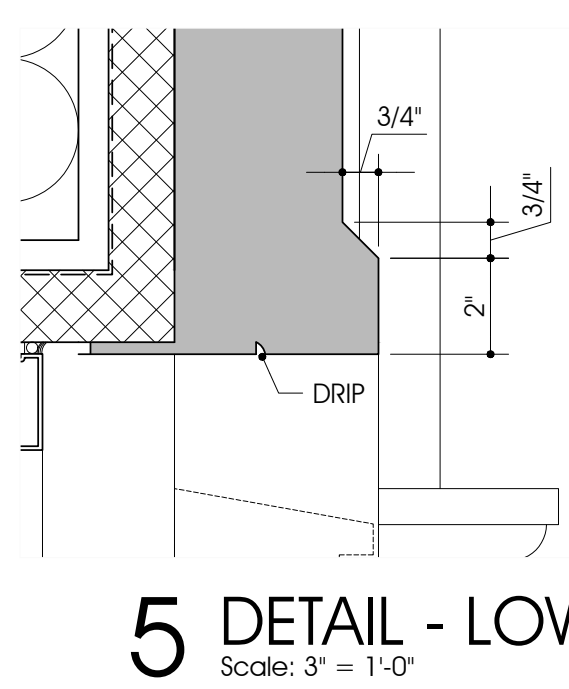
2 WINDOW PLAN
Scale: 1 1/2" = 1'-0"



7 DETAIL - UPPER TRIM
Scale: 3" = 1'-0"

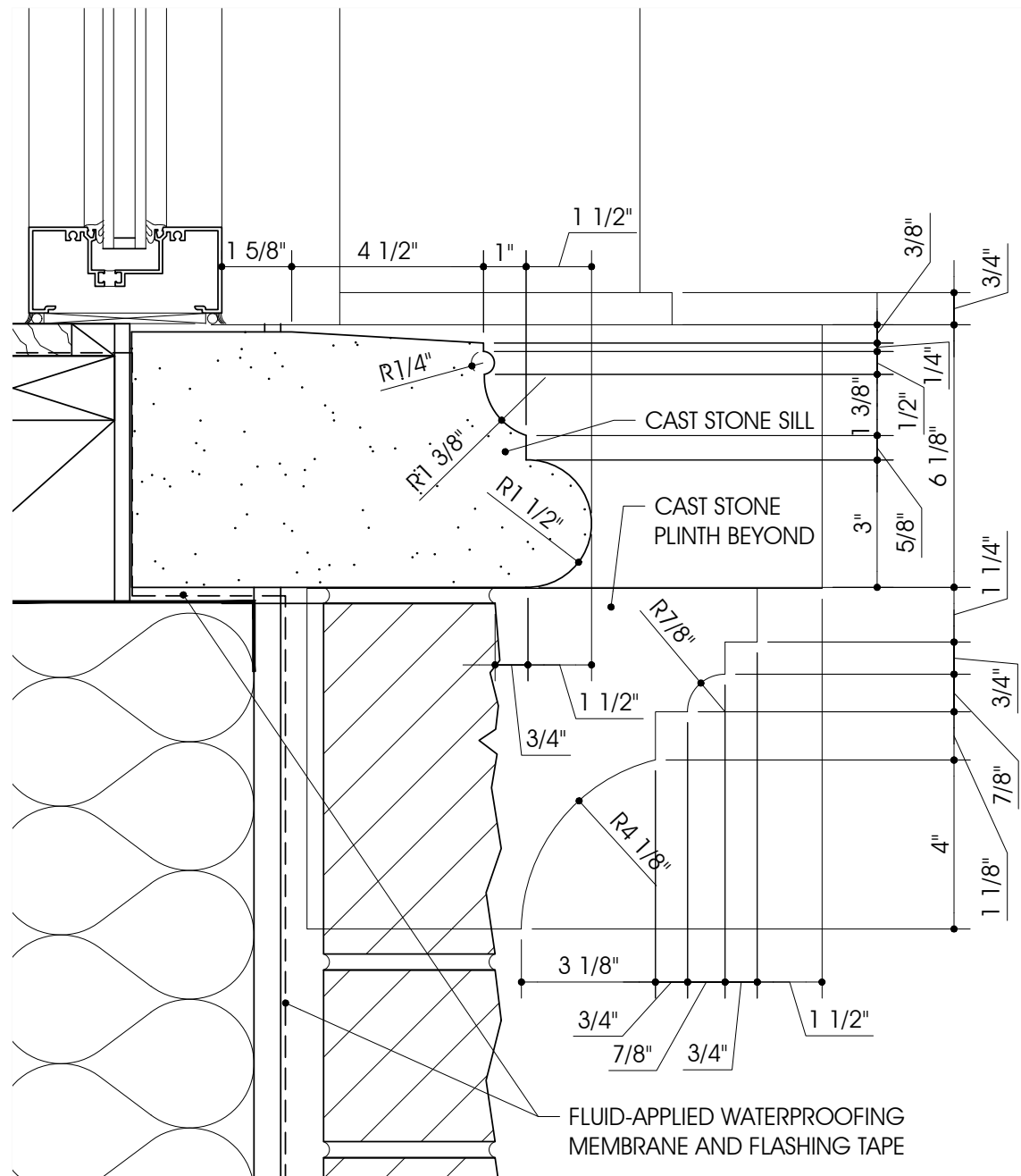


6 DETAIL - CLOVER
Scale: 3" = 1'-0"

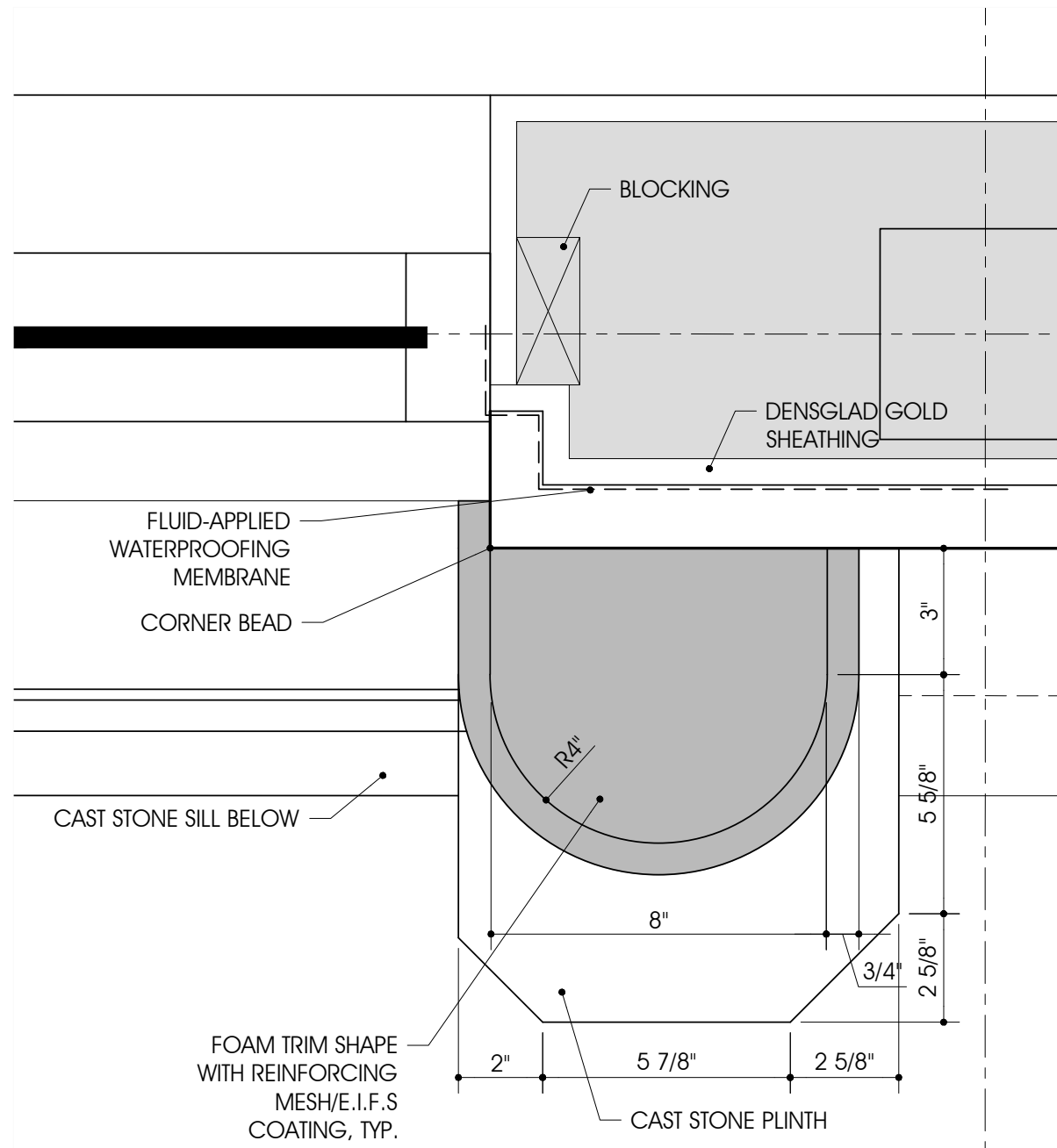


5 DETAIL - LOWER TRIM
Scale: 3" = 1'-0"

GENERAL NOTE:
ALL DECORATIVE FOAM TRIM
SHAPES SHALL HAVE APPLIED
REINFORCING MECH/E.I.F.S.
COATING



9 SILL DETAIL
Scale: 3" = 1'-0"



4 ENLARGED PLAN
Scale: 3" = 1'-0"

ARCHITECTURE
SCOTT MARTSOLF - ARCHITECT

815 Daggett Avenue
Fort Worth, Texas 76104
Phone: (817) 820-0005

ST. JUDE
CATHOLIC
CHURCH

PARISH HALL
REMODEL &
CONNECTOR

500 E DALLAS ST.
MANSFIELD, TX 76063

BID SET

Drawing Title:

DETAILS

Project No.
2307

Date:
12/20/2023

Sheet No.

A7.2