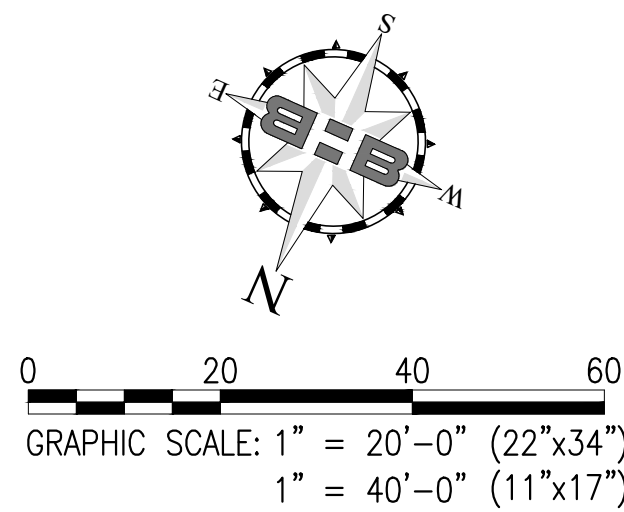
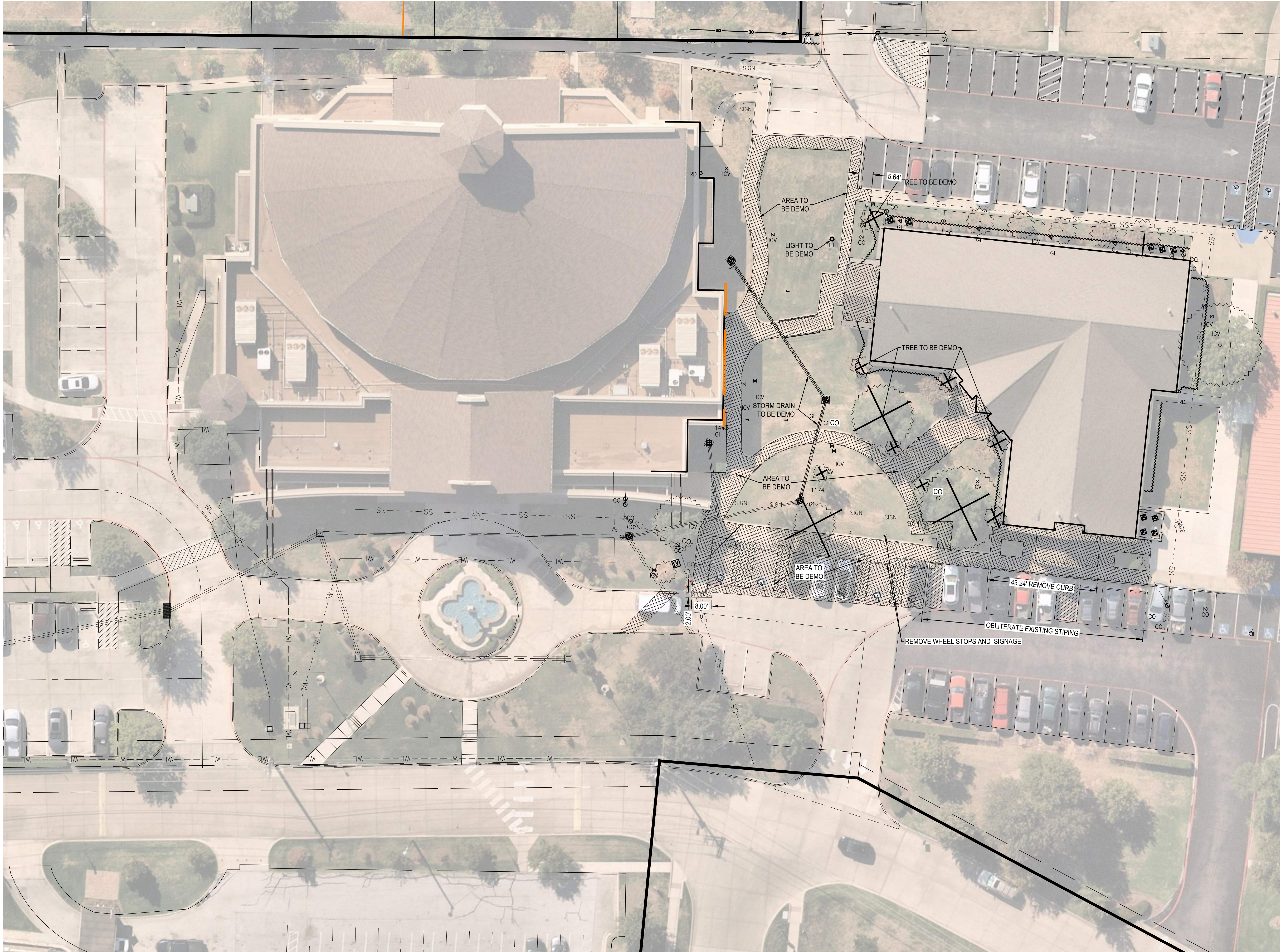


12/20/2023 3:28PM F:\jpb\2023\65046 St. Jude Parish Hall\01 Design & Drafting\02 Civil\2023.65046 CD-DEMO PLAN.dwg DEMO PLAN



- REMOVE AND DISPOSE OF CONCRETE
- REMOVE AND DISPOSE OF STORM DRAIN PIPE
- REMOVE AND DISPOSE OF TREE

BHB
BAIRD, HAMPTON & BROWN
engineering and surveying

949 Hilltop Drive, Weatherford, TX 76086
mail@bhinc.com • 817.596.7575 • bhinc.com
TBPELS Firm #44, #10194146

ARCHITECTURE
SCOTT MARTSOLF - ARCHITECT

815 Daggett Avenue
Fort Worth, Texas 76104
Phone: (817) 820-0005

ST. JUDE
CATHOLIC
CHURCH

PARISH HALL
REMODEL &
CONNECTOR
BUILDING

500 E DALLAS ST.
MANSFIELD, TX 76063

BID SET

Drawing Title:
DEMOLITION PLAN

Project No.
2307

Date:
12/20/2023



Sheet No.
C3.1