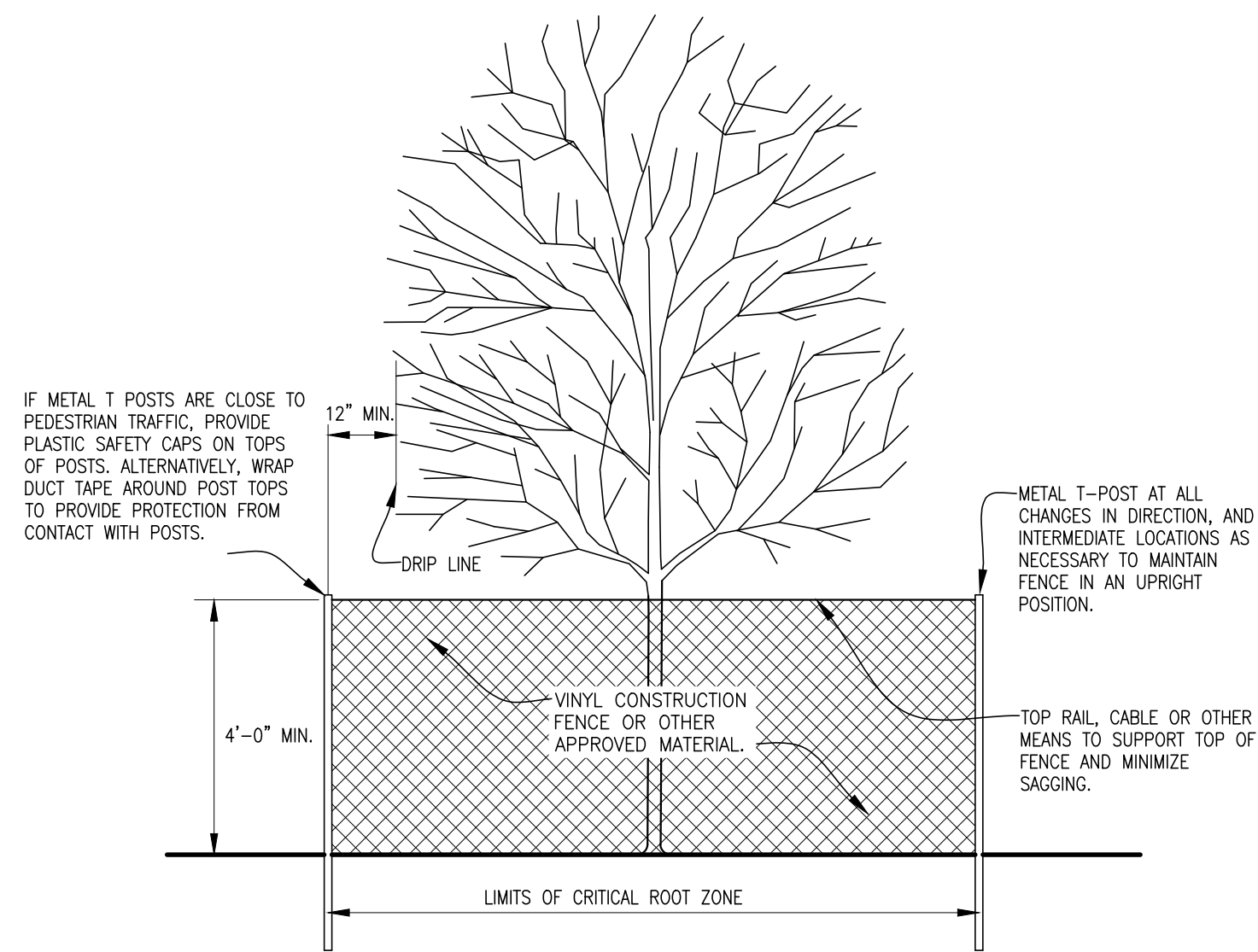


12.20.2023, 3:28PM F:\job\2023\506\046 CD\LANDSCAPE PLAN.dwg DETAILS



TREE PROTECTION FENCING

Not to Scale

NOTES:

ALL TREE PROTECTION FENCING MUST BE INSTALLED BEFORE THE BEGINNING OF SITE GRADING OR OTHER CONSTRUCTION. VEHICLE TRAFFIC WITHIN THE DRIP LINE OF TREES TO BE SAVED IS NOT ALLOWED.

WHEN TREE PROTECTION FENCING IS SHOWN ON THE PLANS, IT IS SHOWN SCHEMATICALLY. FIELD ADJUSTMENTS MAY BE NECESSARY.

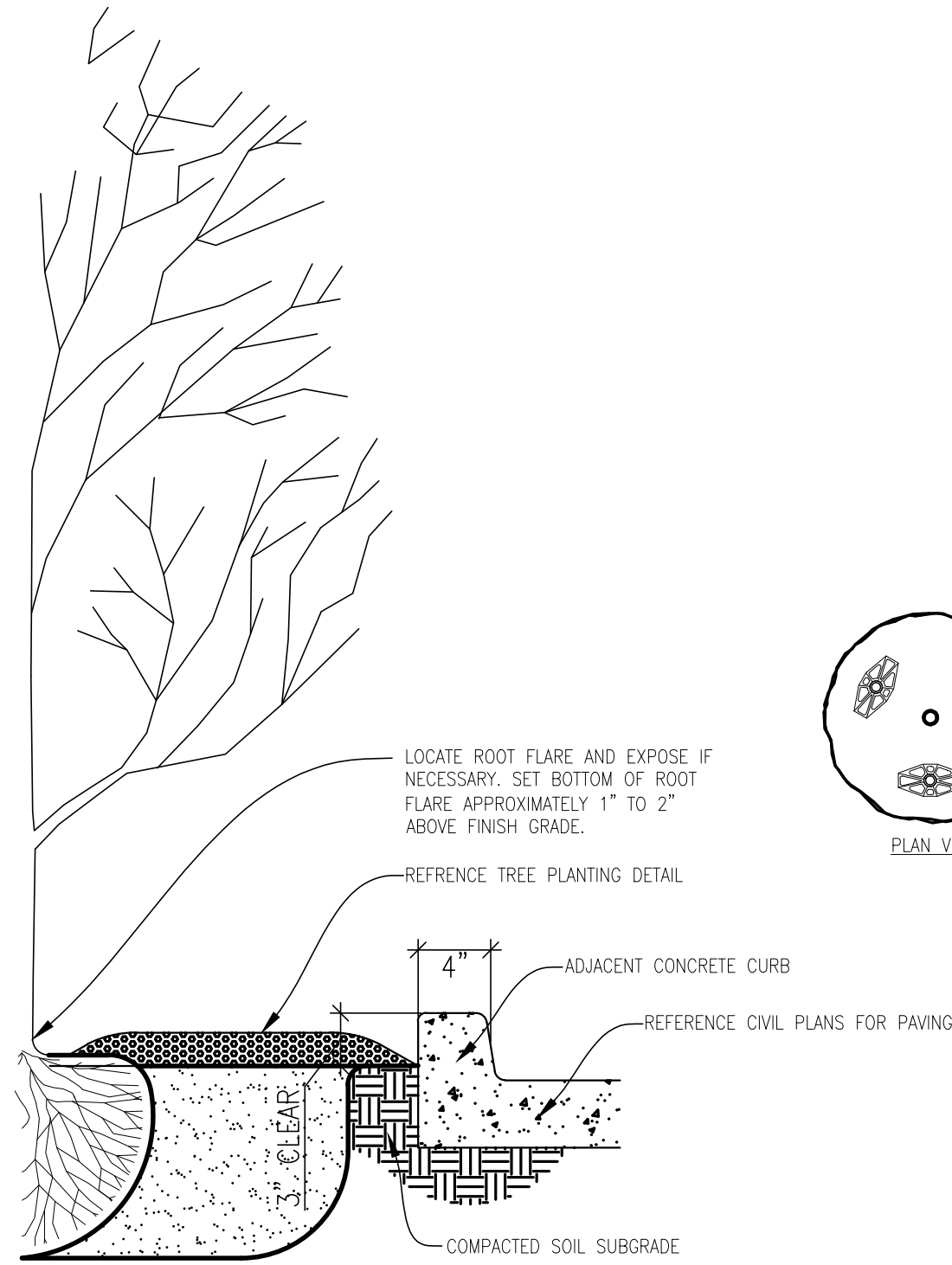
TREE PROTECTION FENCING SHALL BE INSTALLED A MINIMUM OF 12" OUTSIDE OF THE TREE DRIP LINES.

POSTS SHALL BE SET IN A GENERALLY CIRCULAR PATTERN. SQUARE OR RECTANGULAR SHAPES ARE ALLOWED ONLY IF THE ENTIRE DRIP LINE IS ENCLOSED. TREES MAY BE FENCED IN GROUPS.

IF CONSTRUCTION INTERFERES WITH PLACING TREE PROTECTION FENCING AROUND THE ENTIRE CRITICAL ROOT ZONE, SET THE FENCE SO THAT AS MUCH AREA OF THE CRITICAL ROOT ZONE AS POSSIBLE IS PROTECTED. FENCING MAY BE REMOVED TEMPORARILY TO ALLOW FOR CONSTRUCTION ACTIVITIES. FENCING MUST BE REPLACED IMMEDIATELY UPON COMPLETION OF WORK WITHIN THE CRITICAL ROOT ZONE.

WHEN LOCATIONS OF TREE PROTECTION FENCING ARE NOT SHOWN ON THE PLANS, PLACE FENCING AT ALL TREES WITHIN 50 FEET OF A CONSTRUCTION AREA. MAINTAIN FENCE UNTIL PROJECT COMPLETION.

THE FOLLOWING ACTIVITIES ARE PROHIBITED WITHIN THE DRIP LINE OF EXISTING TREES TO BE SAVED: STORING MATERIALS, EQUIPMENT CLEANING, LIQUID DISPOSAL, VEHICLE TRAFFIC, GRADE CHANGES, IMPERVIOUS PAVING, & SOIL COMPACTION.



4" ROLL CURB AT TREE WELL

Not to Scale

NOTES:

TREES 6' TALL OR LESS, AND 1.25" CALIPER OR LESS DO NOT NEED TO BE STAKED.

MOVE OR LIFT TREE ONLY BY THE CONTAINER AND NOT BY THE TRUNK.
DO NOT REMOVE BRANCHES TO BALANCE CROWN WITH ROOTS. DO NOT PRUNE OR FERTILIZE AT TIME OF PLANTING. DO NOT WRAP TRUNKS.

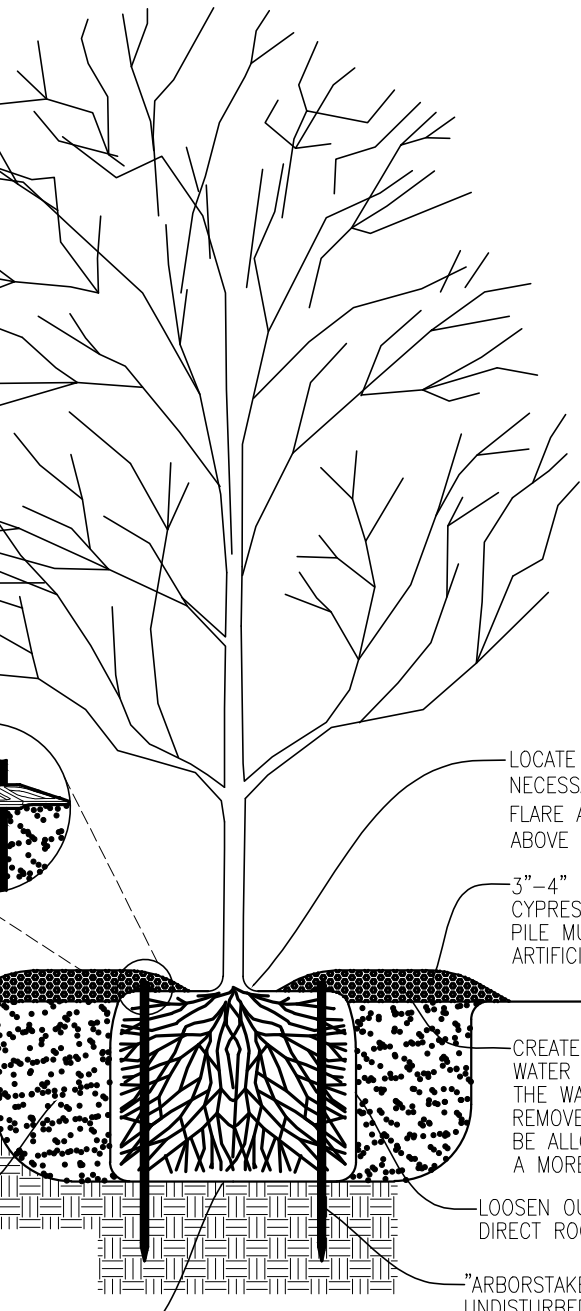
"ARBORSTAKE" BIODEGRADABLE LOCK AND STAKE. REFER TO NOTES ON THIS DETAIL REGARDING NUMBER REQUIRED (BASED ON TREE CALIPER SIZE).

FINISH GRADE

WIDTH OF PLANTING HOLE SHALL BE AT LEAST TWICE THE WIDTH OF THE ROOT BALL. HEAVILY SCARIFY ALL SIDES OF HOLE.

EXISTING NATIVE SOIL BACKFILL ONLY. BREAK UP DIRT CLOSERS LARGER THAN 3 INCHES. THOROUGHLY SETTLE WITH WATER, AND TAMP. DO NOT OVER-COMPACT BACKFILL.

SET ROOT BALL ON STABLE, UNDISTURBED SOIL.



"ARBORSTAKES" REQUIRE A MINIMUM OF (3) STAKES PER TREE AND ARE BASED ON CALIPER INCH.

3" CALIPER - USE 3 STAKES
4" CALIPER - USE 4 STAKES
5" CALIPER - USE 5 STAKES
6" CALIPER - USE 6 STAKES

STANDARD STAKE LENGTHS ARE 30", 40" AND 52"

30" - SUITABLE FOR CONTAINERIZED TREES UP TO AND INCLUDING 3" CALIPER.

40" - SUITABLE FOR CONTAINERIZED TREES LARGER THAN 3" AND UP TO 5" CALIPER.

52" - SUITABLE FOR CONTAINERIZED TREES LARGER THAN 5" CALIPER.

LOCATE ROOT FLARE AND EXPOSE IF NECESSARY. SET BOTTOM OF ROOT FLARE APPROXIMATELY 1" TO 2" ABOVE FINISH GRADE.

3"-4" LAYER OF DOUBLE SHREDDED CEDAR, CYPRESS OR HARDWOOD MULCH. DO NOT PILE MULCH AGAINST TRUNK. DO NOT USE ARTIFICIALLY COLORED MULCH.

CREATE RING OF MULCH TO HOLD IRRIGATION WATER DURING THE FIRST YEAR. AT THE END OF THE WARRANTY PERIOD, THE CONTRACTOR SHALL REMOVE THE MULCH RING SO THAT WATER WILL BE ALLOWED TO EXPAND OUTWARD AND CREATE A MORE EXTENSIVE ROOT SYSTEM.

LOOSEN OUTER ROOTS TO DIRECT ROOTS OUTWARD.

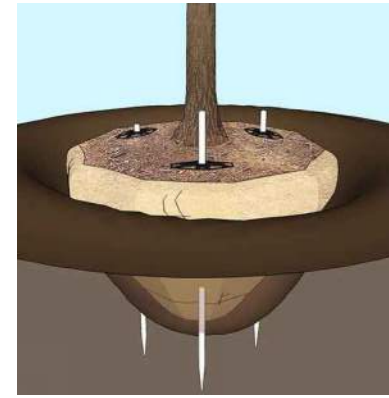
"ARBORSTAKES" PRODUCT. DRIVE WOOD STAKES 6"-8" INTO UNDISTURBED SUBGRADE SOIL. FOLLOW MANUFACTURERS' INSTRUCTIONS, INCLUDING RECOMMENDATION FOR NUMBER OF STAKES PER TREE. REFER TO NOTES ON THIS DETAIL.

WWW.ARBORSTAKES.COM. EQUIVALENT PRODUCTS MAY BE ALLOWED. OWNERS REPRESENTATIVE MUST PRE-APPROVE SUBSTITUTIONS.

TREE PLANTING

Section

Not to Scale



ARBORSTAKES INSTALLATION



ARBORSTAKES INSTALLATION

NOTES:

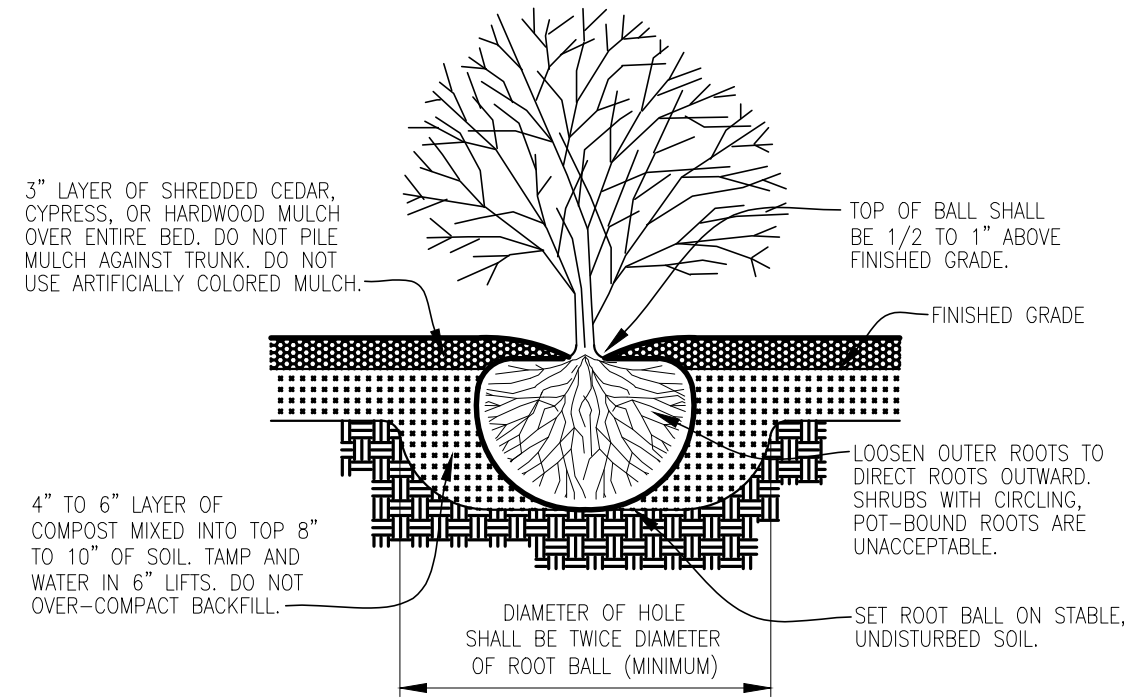
WITHIN 18" TO 24" (HORIZONTAL DISTANCE) OF EXTERIOR BUILDING FACADES, REDUCE DEPTH OF MULCH TO 1" TO ENSURE THAT MULCH IS AT LEAST SEVERAL INCHES BELOW FINISH FLOOR ELEVATION. NEVER INSTALL MULCH ABOVE FFE.

REMOVE CONTAINER WHILE KEEPING ROOT BALL INTACT.

IF ROOT BALL IS B&B, REMOVE TOP ONE-THIRD OF BURLAP WHILE KEEPING ROOT BALL INTACT.

ONCE PLANT IS PROPERLY PLACED IN HOLE AND BACKFILLED, WATER SUFFICIENTLY TO SETTLE THE SOIL AND THOROUGHLY WET ROOT BALL.

DO NOT FERTILIZE AT TIME OF PLANTING.



SHRUB/PERENNIAL PLANTING

Section

Not to Scale

NOTES:

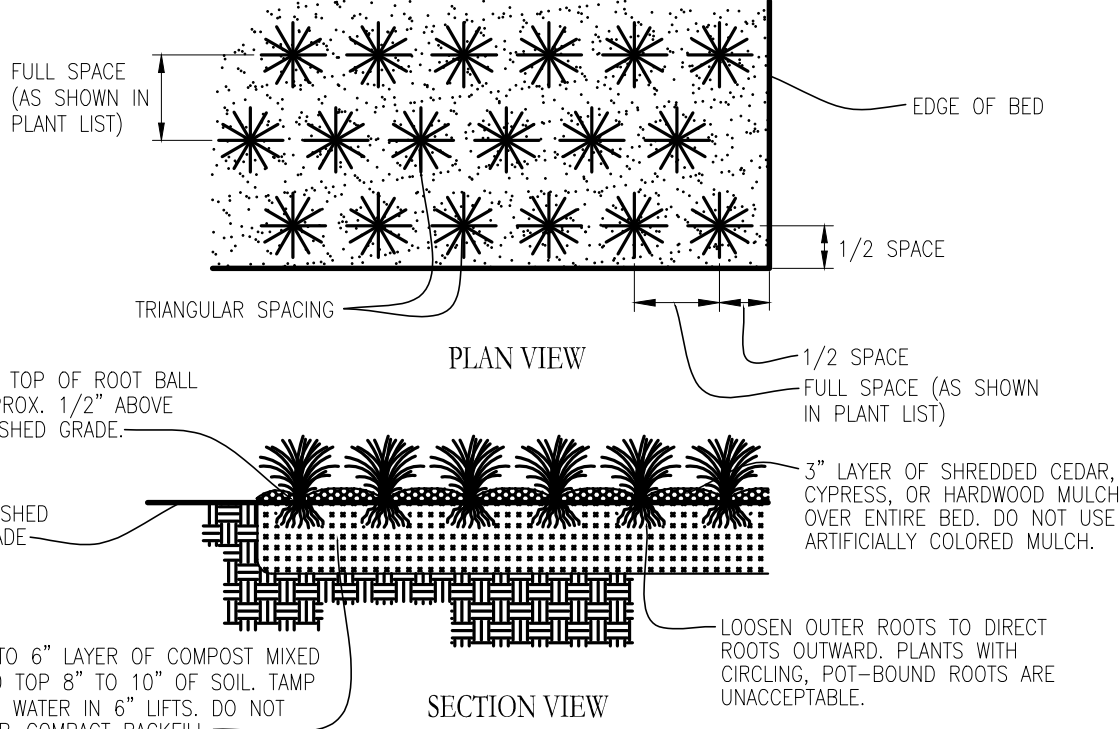
WITHIN 18" TO 24" (HORIZONTAL DISTANCE) OF EXTERIOR BUILDING FACADES, REDUCE DEPTH OF MULCH TO 1" TO ENSURE THAT MULCH IS AT LEAST SEVERAL INCHES BELOW FINISH FLOOR ELEVATION. NEVER INSTALL MULCH ABOVE FFE.

REMOVE CONTAINER WHILE KEEPING ROOT BALL INTACT.

IF ROOT BALL IS B&B, REMOVE TOP ONE-THIRD OF BURLAP WHILE KEEPING ROOT BALL INTACT.

ONCE PLANT IS PROPERLY PLACED IN HOLE AND BACKFILLED, WATER SUFFICIENTLY TO SETTLE THE SOIL AND THOROUGHLY WET ROOT BALL.

DO NOT FERTILIZE AT TIME OF PLANTING.



GROUNDCOVER/ANNUAL PLANTING

Plan/Section

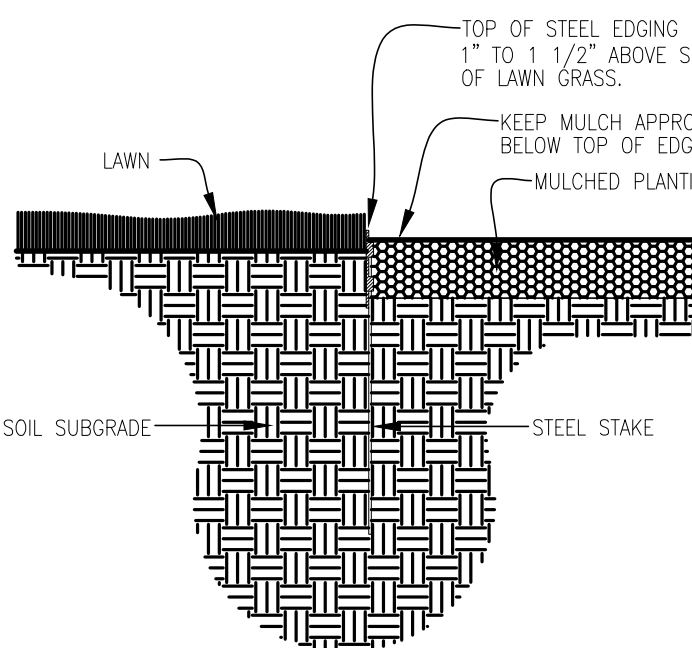
Not to Scale

NOTES:

STEEL EDGING SHALL BE COMMERCIAL GRADE; 3/16" THICK; BLACK COLOR (PREFERRED) OR GREEN.

INSTALL EDGING SO THAT CURVED SECTIONS FORM SMOOTH RADIIUSES. STRAIGHT SECTIONS SHALL BE STRAIGHT AND TRUE, WITHOUT BOWS OR WAVERS.

AT ENDS OF RUNS, CUT A CHAMFER (ABOUT 1 INCH) INTO THE EXPOSED TOP END POINT TO ELIMINATE SHARP POINTS. POINTS MAY ALSO BE GROUND SMOOTH TO FORM A MINIMUM 3/4 INCH RADIUS.



STEEL EDGING BETWEEN PLANT BED & LAWN

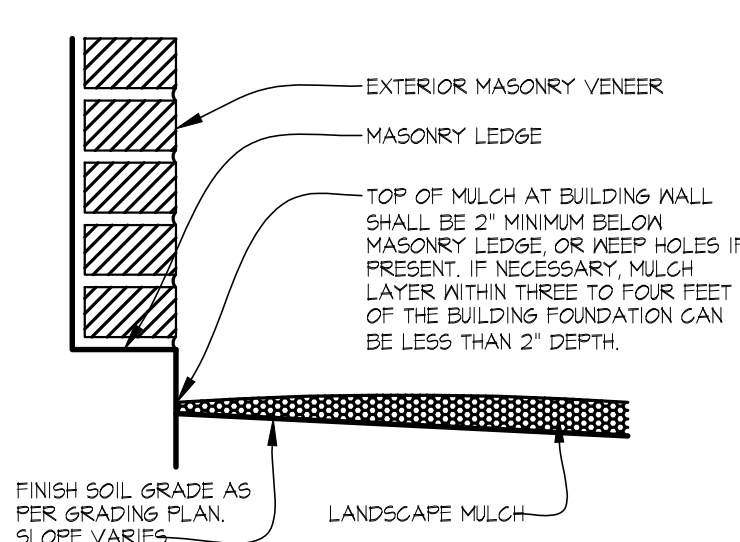
Section

Not to Scale

NOTES:

LANDSCAPE CONTRACTOR SHALL COORDINATE CLOSELY WITH GRADING/GENERAL CONTRACTOR TO ENSURE THAT FINISH GRADE IS CORRECT AND WILL ALLOW MULCH TO BE PLACED AS SHOWN IN THIS DETAIL.

IN LOCATIONS WHERE THERE IS AN EXTERIOR BUILDING MATERIAL OTHER THAN MASONRY, THE TOP LEVEL OF MULCH SHALL BE AT LEAST 4" BELOW FINISH FLOOR ELEVATION.



LANDSCAPE MULCH AT BUILDING WALL

Section

Not to Scale

BHB
BAIRD, HAMPTON & BROWN
engineering and surveying

949 Hilltop Drive, Weatherford, TX 76086
mail@bhinc.com • 817.596.7575 • bhinc.com
TBPELS Firm #44, #10194146

ARCHITECTURE
SCOTT MARTSOLF - ARCHITECT

815 Daggett Avenue
Fort Worth, Texas 76104

Phone: (817) 820-0005

ST. JUDE
CATHOLIC
CHURCH

PARISH HALL
REMODEL &
CONNECTOR
BUILDING

500 E DALLAS ST.
MANSFIELD, TX 76063

BID SET

Drawing Title:
LANDSCAPE DETAILS

Project No.
2307

Date:
12/20/2023



Sheet No.

LS06

Dec 20, 2023