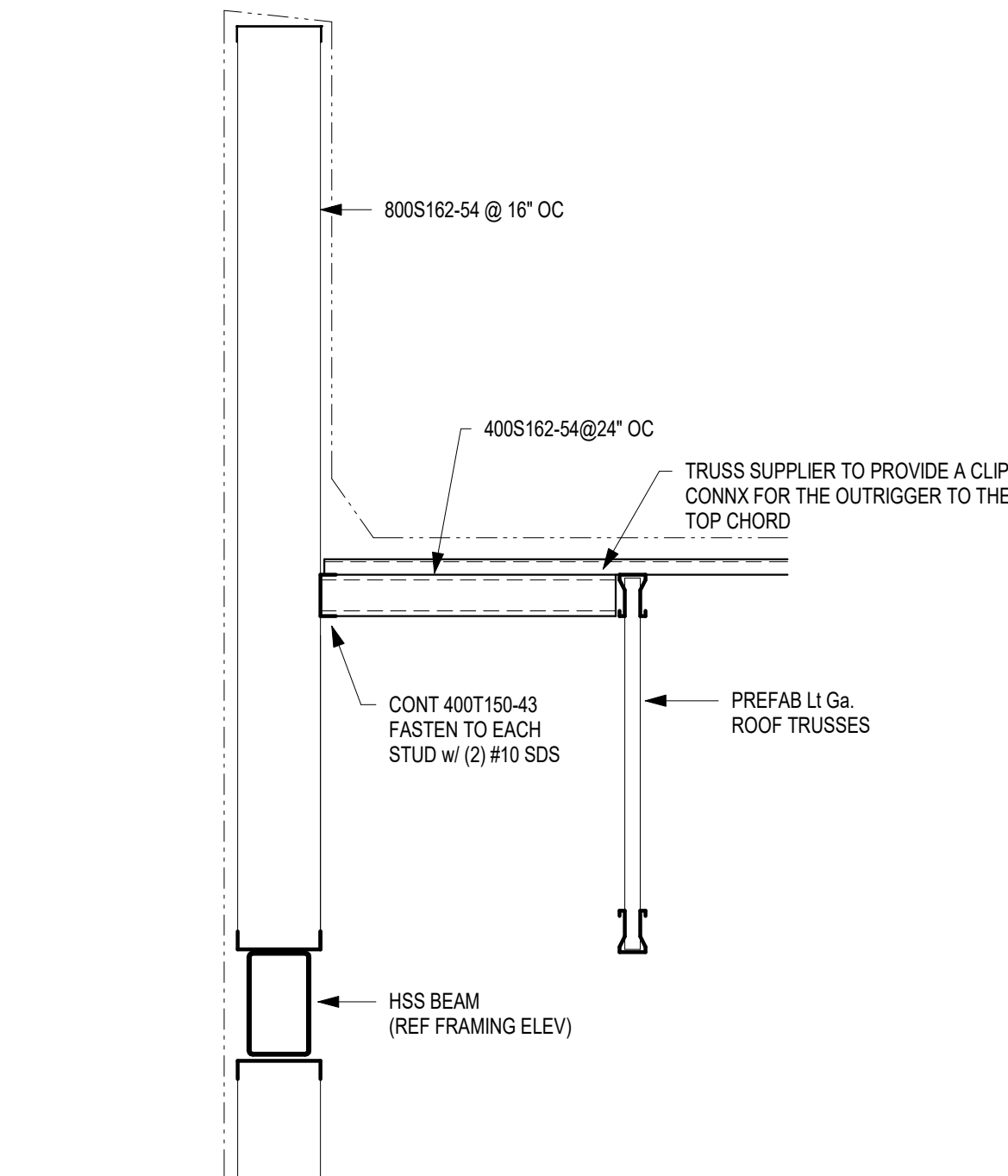
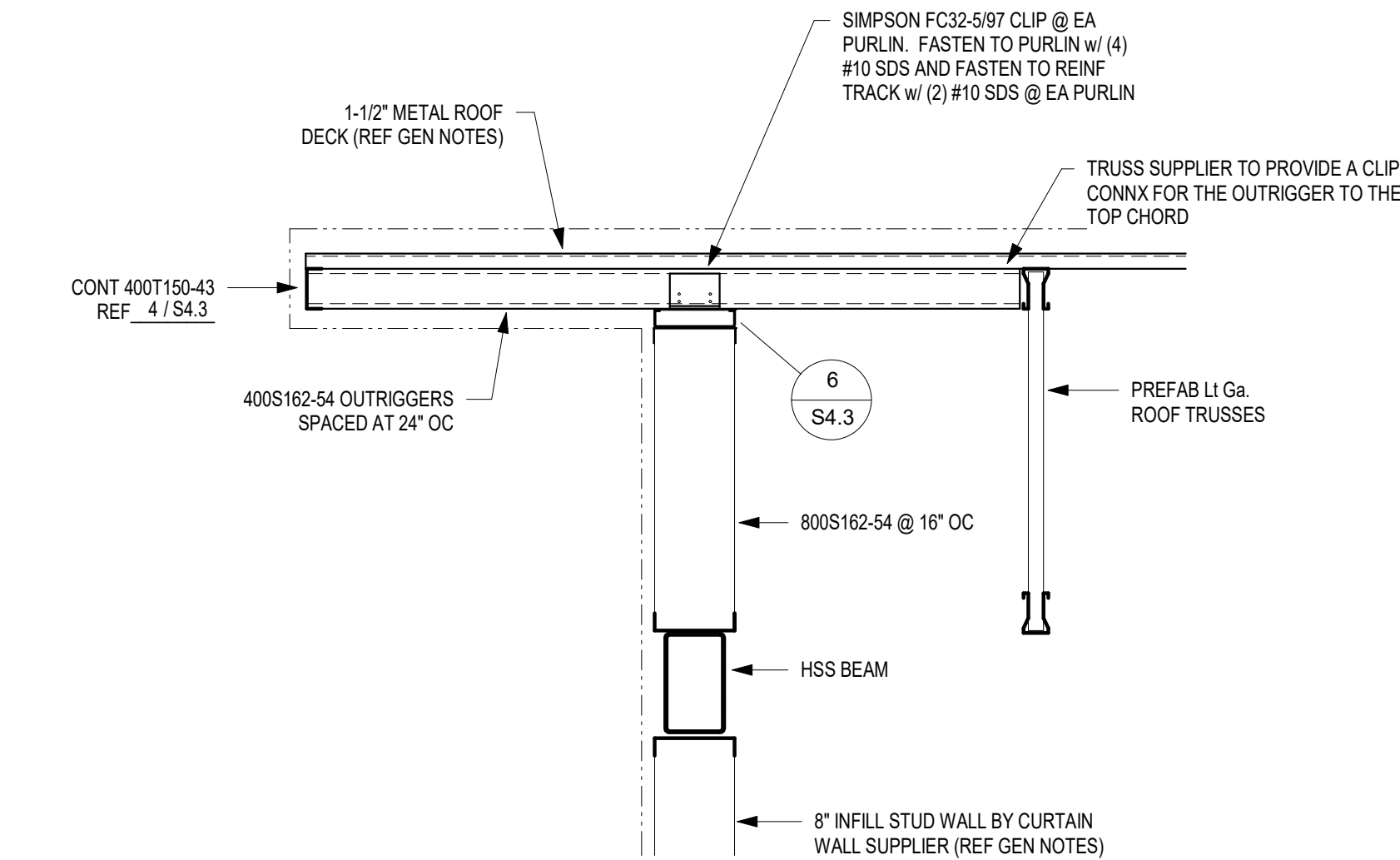


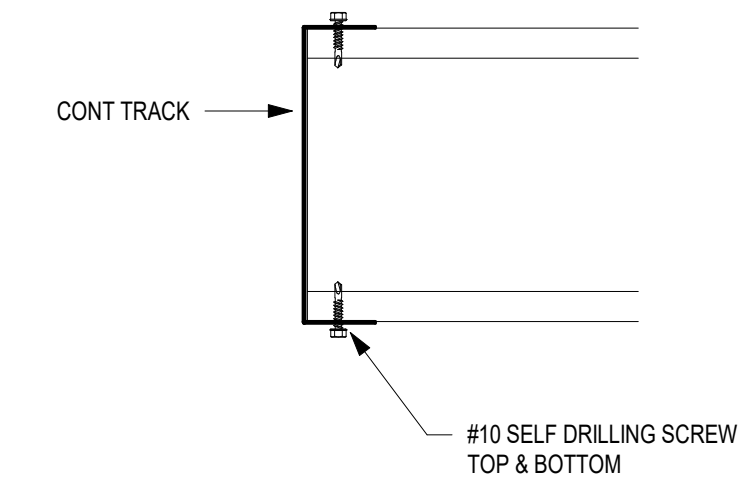
1 SECTION
1" = 1'-0"



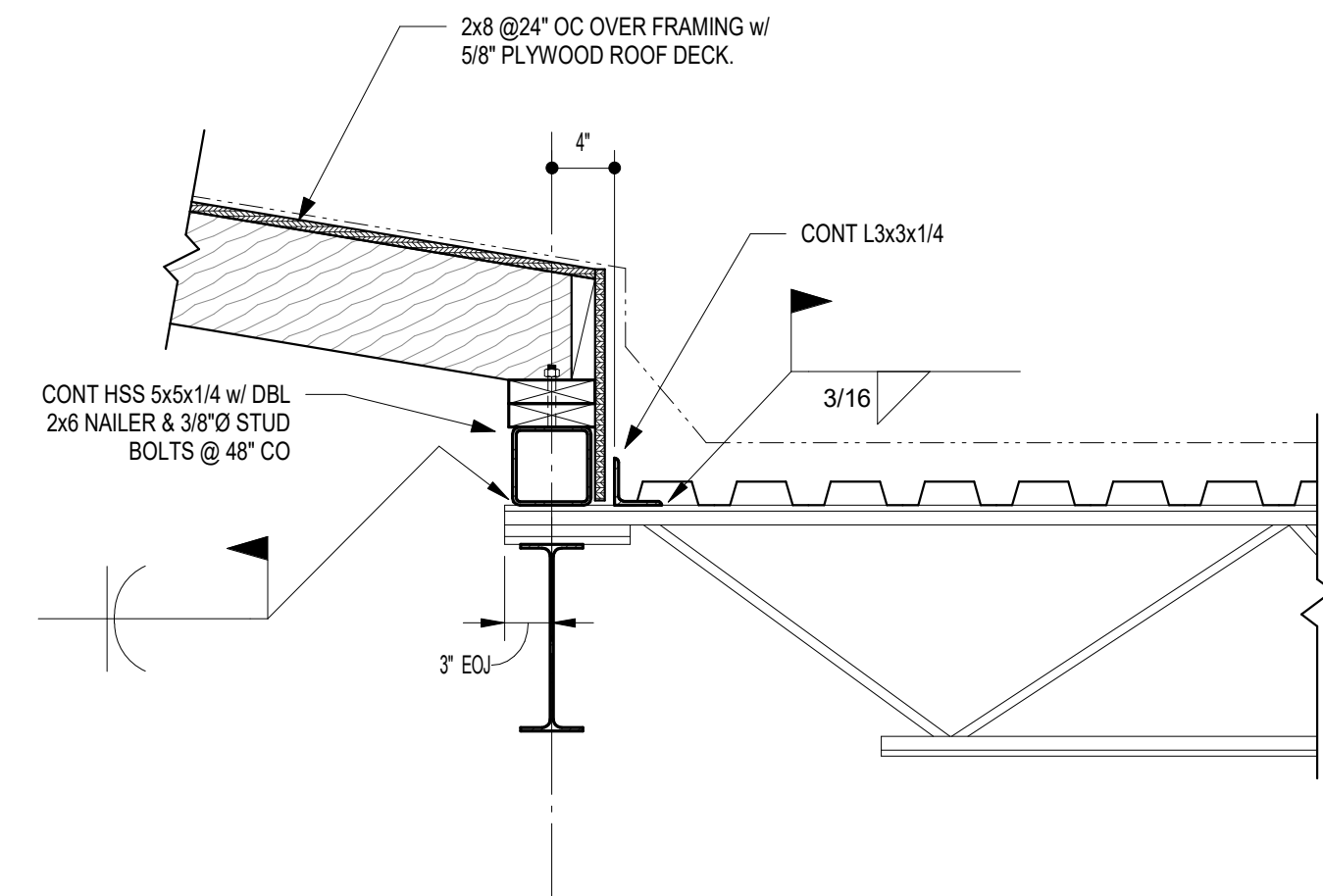
2 SECTION
3/4" = 1'-0"



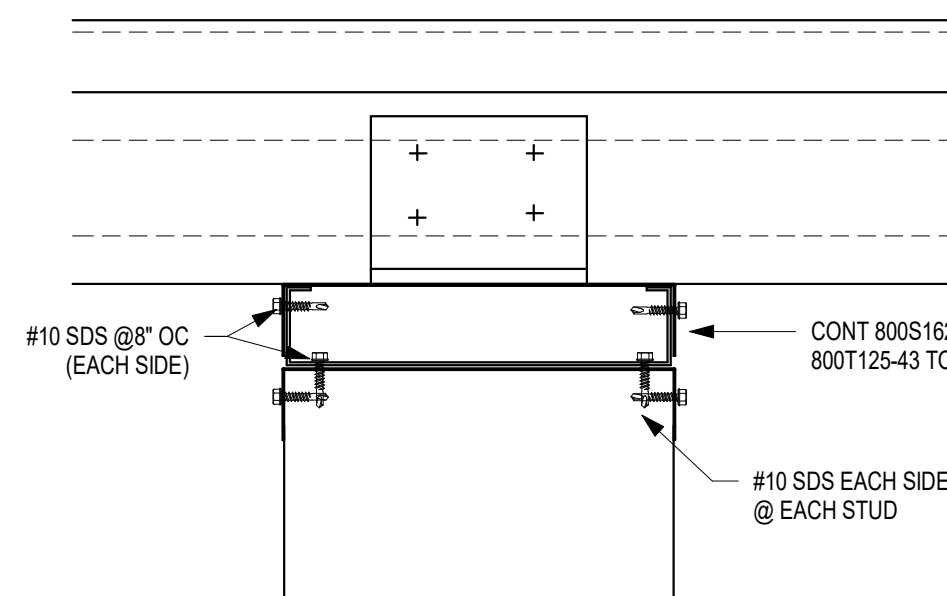
3 SECTION
3/4" = 1'-0"



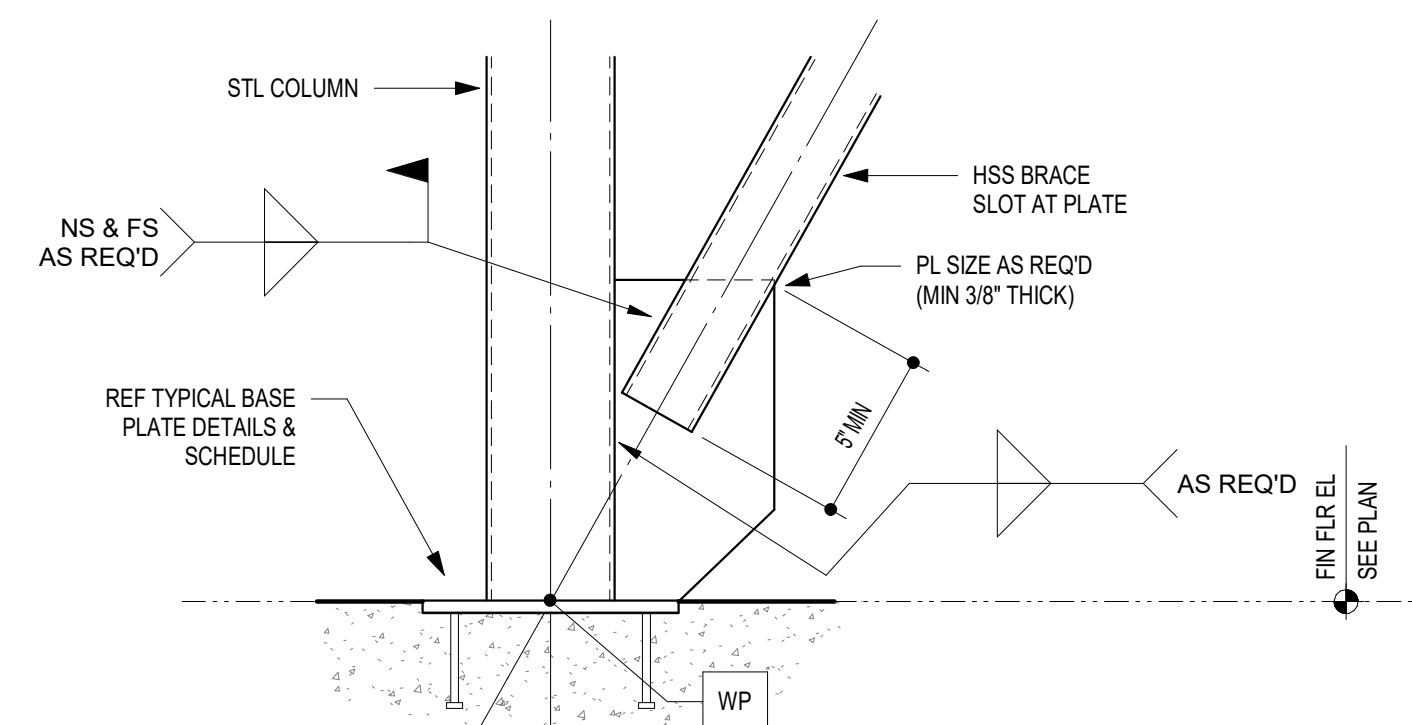
4 DETAIL
NTS



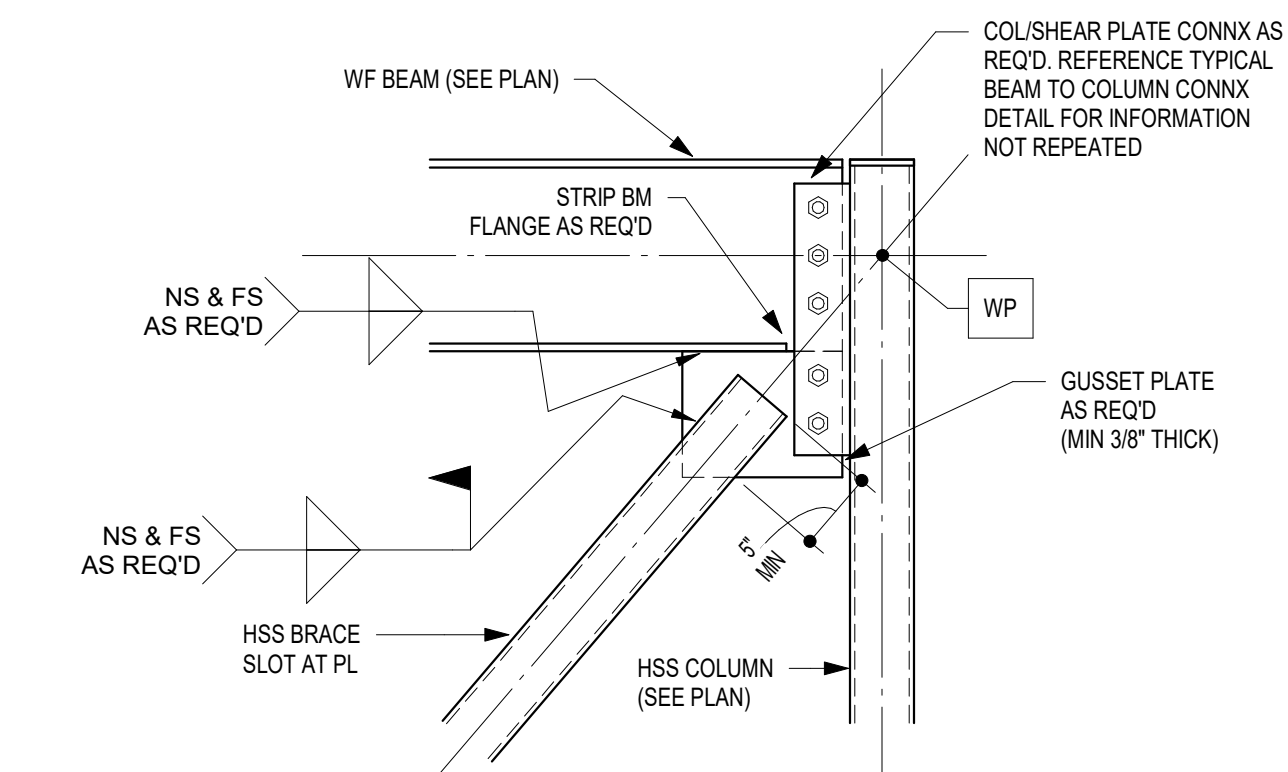
5 SECTION
1" = 1'-0"



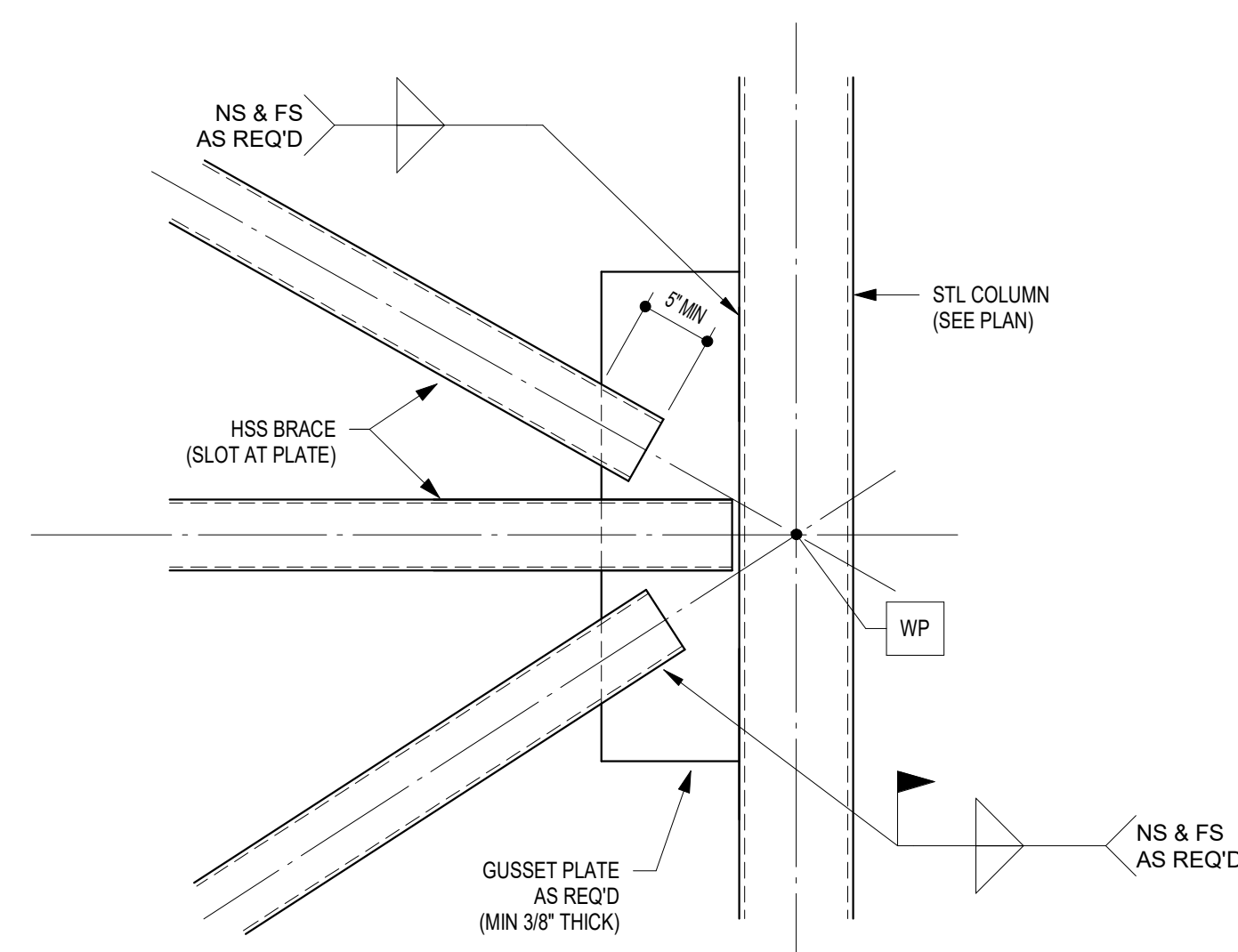
6 DETAIL
3" = 1'-0"



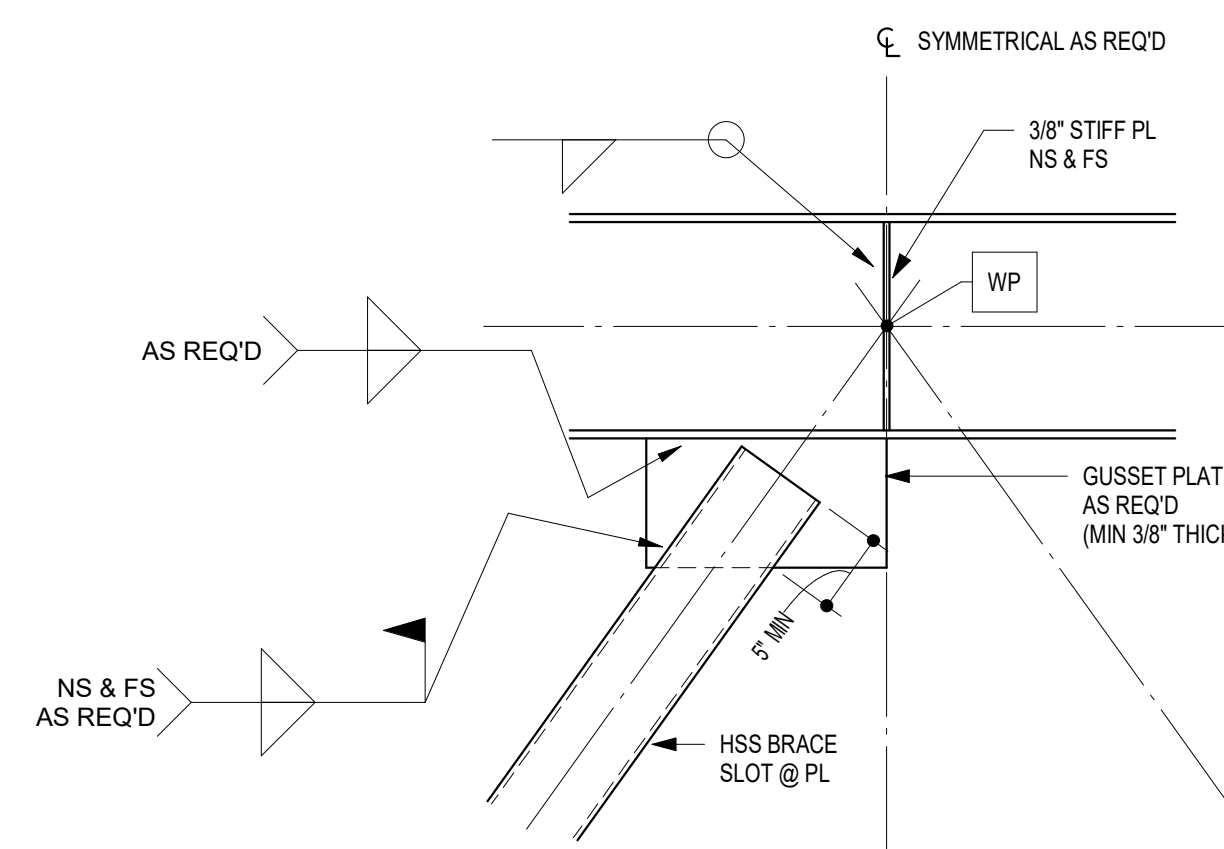
7 TYP VERT BRACE CONNX DETAIL
NTS



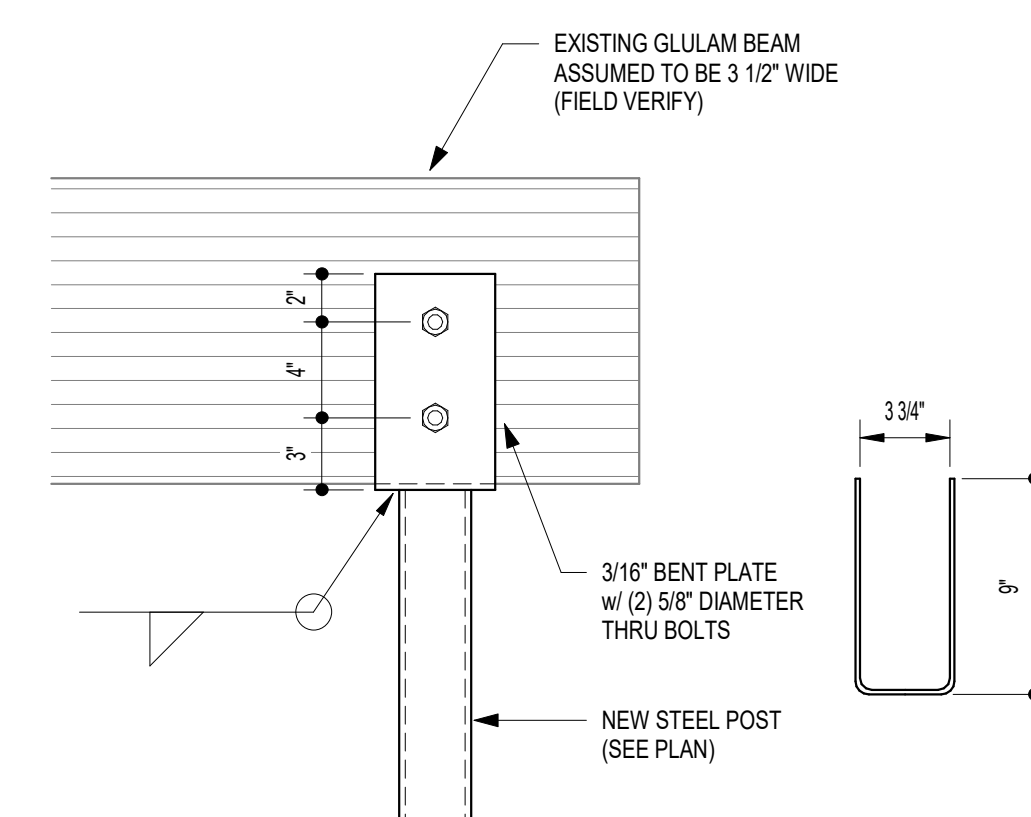
8 TYP VERT BRACE CONNX DETAIL
NTS



9 TYP VERT BRACE CONNX DETAIL
NTS



10 TYP VERT BRACE CONNX DETAIL
NTS



11 DETAIL
1 1/2" = 1'-0"

ARCHITECTURE

SCOTT MARTSOLF - ARCHITECT

410 East 6th Street
Fort Worth, Texas 76102

Phone: (817) 820-0005
Fax: (817) 820-0008

ST. JUDE CATHOLIC CHURCH

PARISH HALL REMODEL & CONNECTOR BUILDING

500 E DALLAS ST.
MANSFIELD, TX 76063



HnH ENGINEERING, INC.

105 Sproles Drive Fort Worth, Texas 76126
TBPE Firm No. F-13825 (817) 713-4977

BID SET

Drawing Title:
DETAIL SHEET

Project No.
2023.297

Date:
12/20/2023



Sheet No.

S4.3