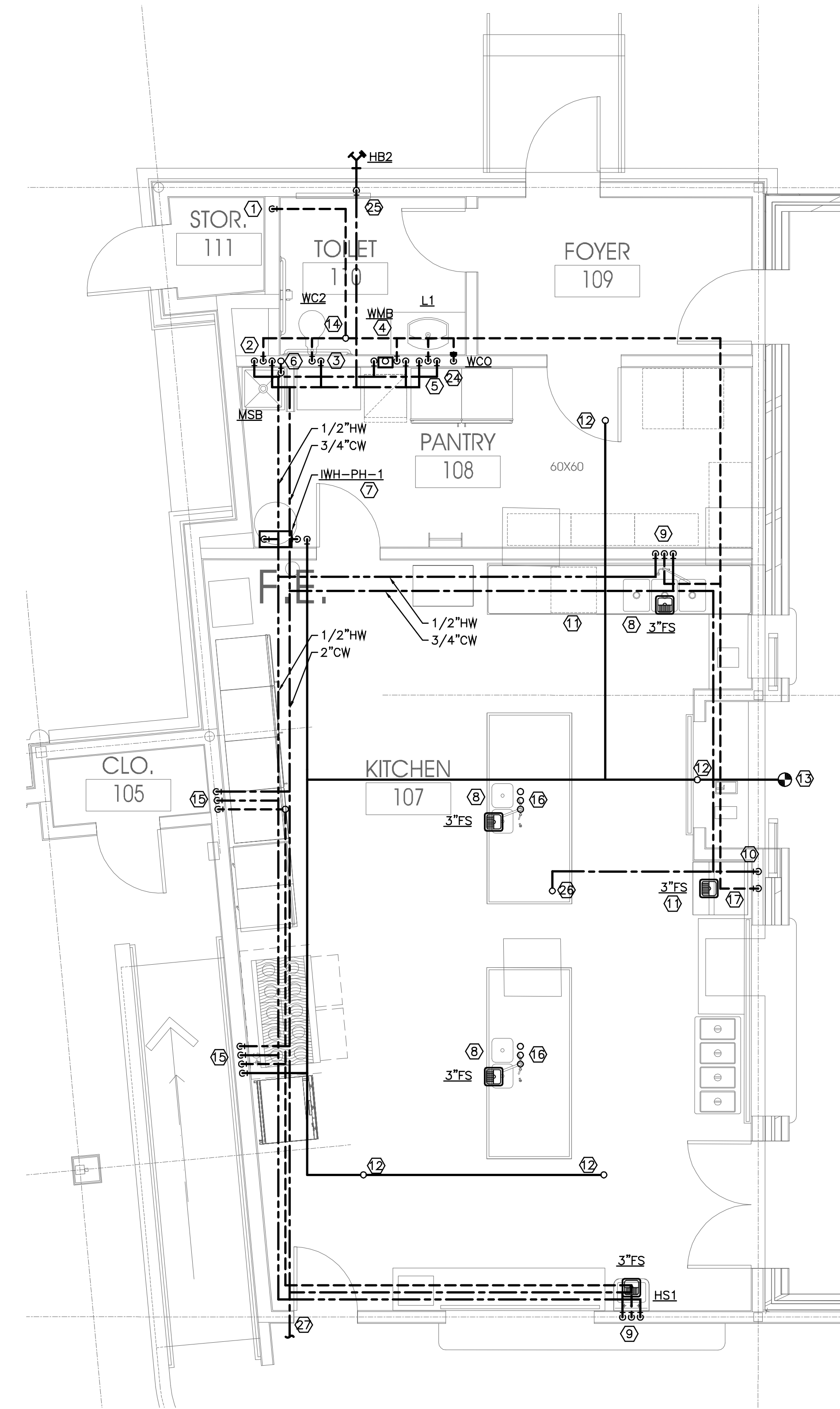
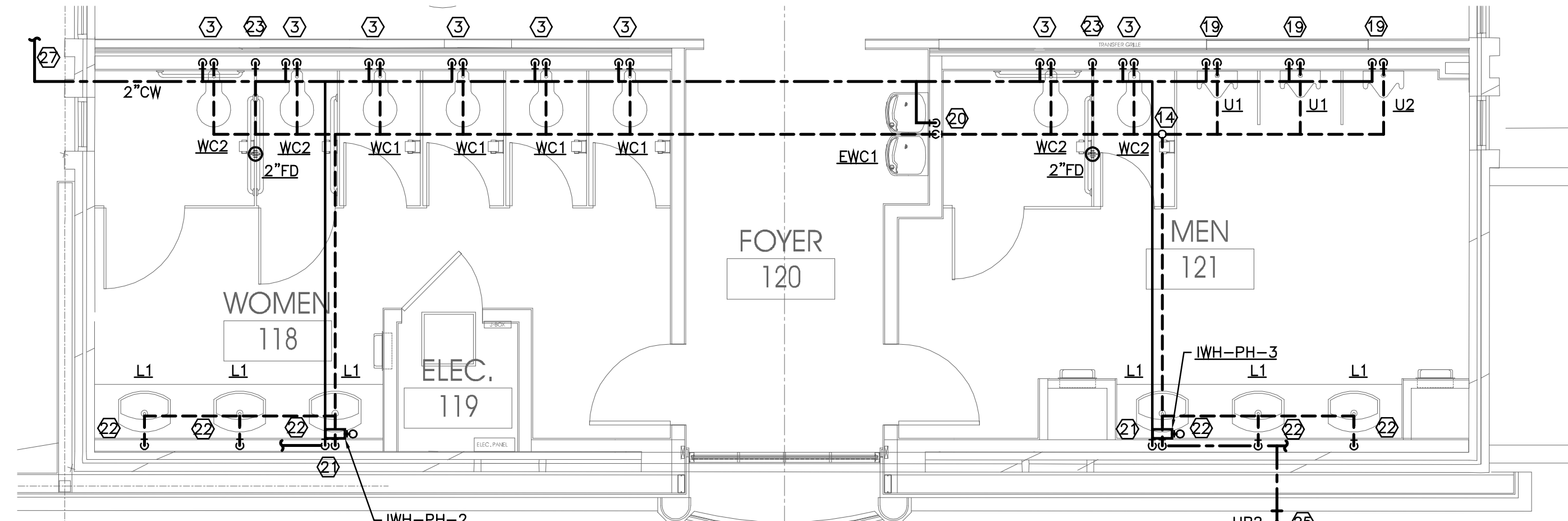


C:\Work\Projects\23-47 St. Jude CC - Parish Hall Addn\Plum\2347-F32.dwg 01/15/24 13:51:27 Rene's ASUS



1 PARTIAL FLOOR - ENLARGED KITCHEN - PLUMBING PLAN  
Scale: 1/4" = 1'-0"



1 PARTIAL FLOOR - ENLARGED RESTROOM - PLUMBING PLAN  
Scale: 1/4" = 1'-0"

### NOTES BY SYMBOL "T"

- ② 1/2-INCH COLD WATER TO PLUMBING FIXTURE; 1 1/2 VENT UP, 2-INCH WASTE DOWN.
- ③ 1/2-INCH COLD WATER TO IWH AND EACH LAVATORY; ROUTE 1/2-INCH HOT WATER FROM IWH TO EACH LAVATORY. REFER TO DETAIL 5/P4.1 FOR ADDITIONAL INSTRUCTIONS.
- ④ 2-INCH WASTE FROM PLUMBING FIXTURE; 1 1/2-INCH VENT UP.
- ⑤ 2-INCH WASTE FROM BELOW.
- ⑥ 2-INCH WASTE DOWN, 2-INCH VENT UP WITH CLEAN-OUT AT BASE OF RISER.
- ⑦ 1/2-INCH COLD WATER TO PLUMBING FIXTURE.
- ⑧ 1/2-INCH COLD WATER UP TO PLUMBING FIXTURE. REFER TO P2.2 FOR ADDITIONAL INSTRUCTIONS.
- ⑨ REFER TO P2.1 FOR CONTINUATION.

### GENERAL NOTES THIS SHEET

- 1. REFER TO P0.1 FOR ADDITIONAL INSTRUCTIONS.
- 2. COORDINATE ALL PLUMBING WITH OWNER/ARCHITECT PRIOR TO PURCHASING THE FIXTURE.

### NOTES BY SYMBOL "T"

- ① 3-INCH VENT FROM BELOW
- ② 3/4-INCH HOT AND COLD WATER DOWN TO PLUMBING FIXTURE; 2-INCH VENT FROM BELOW.
- ③ 1 1/2-INCH COLD WATER TO PLUMBING FIXTURE; 2-INCH VENT FROM BELOW.
- ④ 1/2-INCH HOT AND COLD WATER TO PLUMBING FIXTURE; 2-INCH WASTE DOWN, 1 1/2-INCH VENT UP. REFER TO DETAIL 2/P4.1 FOR ADDITIONAL INSTRUCTIONS.
- ⑤ 1/2-INCH HOT AND COLD WATER TO PLUMBING FIXTURE; 2-INCH WASTE DOWN, 1 1/2-INCH VENT UP.
- ⑥ 2-INCH COLD CONDENSATE FROM ABOVE; TURN OUT FROM WALL AND DOWN TO DISCHARGE INDIRECTLY AT MOP SINK.
- ⑦ 3/4-INCH COLD WATER AND 1-INCH GAS (120 MBH) TO IWH-PH-1; 3/4-INCH HOT WATER FROM IWH-PH-1. PROVIDE REGULATOR IN GAS LINE TO MAINTAIN GAS PRESSURE WITHIN MANUFACTURER'S MINIMUM AND MAXIMUM GAS PRESSURES (DESIGN BASIS UNIT - 4/10.5 INCHES WATER COLUMN MIN/MAX RESPECTIVELY). REFER TO DETAIL 4/P4.1 FOR ADDITIONAL INSTRUCTIONS.
- ⑧ ROUTE FULL-SIZE WASTE FROM EACH BASIN OF KITCHEN FIXTURE TO DRAIN INDIRECTLY AT FLOOR SINK.
- ⑨ 1/2-INCH HOT AND COLD WATER DOWN TO PLUMBING FIXTURE (BY OTHERS); 2-INCH VENT FROM BELOW.
- ⑩ 1/2-INCH COLD WATER DOWN TO FILTRATION SYSTEM FOR EQUIPMENT (BEVERAGE- OR OR ICE-MACHINE). PROVIDE REDUCED PRESSURE ZONE ASSEMBLY (RPZA) WHERE BACKFLOW PREVENTION IS NOT INTEGRAL TO EQUIPMENT.
- ⑪ ROUTE FULL SIZE EQUIPMENT DRAIN (ICE-MAKER OR DISHWASHER) INDIRECTLY TO NEAREST FLOOR SINK.
- ⑫ 1/2-INCH GAS UP TO EQUIPMENT ON ROOF. REFER TO P2.2 FOR CONTINUATION AND ADDITIONAL INSTRUCTIONS.
- ⑬ EXTEND 3/4-INCH GAS FROM 1-INCH GAS LINE IN ADJACENT ATTIC SPACE.
- ⑭ 3-INCH VENT THROUGH ROOF.
- ⑮ 1/2-INCH COLD AND HOT WATER DOWN IN WALL TO PLUMBING FIXTURE; 2-INCH VENT FROM BELOW. REFER TO DETAIL 5/P4.1 FOR ADDITIONAL INSTRUCTIONS.
- ⑯ 1/2-INCH COLD AND HOT WATER FROM BELOW; 2-INCH VENT DOWN. REFER TO DETAIL 6/P4.1 FOR ADDITIONAL INSTRUCTIONS.
- ⑰ 2-INCH VENT FROM BELOW (FLOOR SINK)
- ⑱ 1/2-INCH GAS (293 MBH) DOWN TO GAS MANIFOLD FOR KITCHEN EQUIPMENT. REFER TO FOOD SERVICE EQUIPMENT VENDOR DRAWINGS FOR ADDITIONAL INSTRUCTIONS AND CONNECTION TO EQUIPMENT.
- ⑲ 3/4-INCH COLD WATER TO PLUMBING FIXTURE; 2-INCH WASTE DOWN, 2-INCH VENT UP.



APPROVED

Reviewed for Code Compliance  
ProjectName: C2-24-02038 &  
CR-24-00667  
Date: 4/25/2024  
Approved plans in no way  
excludes items that may be found  
in the field and shall not be  
construed to be a permit or  
approval of any violation of any  
code provision.

## ARCHITECTURE

SCOTT MARTSOLF - ARCHITECT

815 Daggett Avenue  
Fort Worth, Texas 76104  
Phone: (817) 820-0005

## ST. JUDE CATHOLIC CHURCH

## PARISH HALL REMODEL & CONNECTOR

500 E DALLAS ST.  
MANSFIELD, TX 76063

## PERMIT SET

Drawing Title:  
PARTIAL FIRST FLOOR -  
PLUMBING PLANS

Project No.  
2307

Date:  
1/12/2024

Sheet No.

P3.2



MEP Consultant  
Rene A. Culross  
Rene A. Culross, P.E., PLLC  
1820 Hunting Green Drive  
Fort Worth, TX 76134  
817-798-6642  
raculross@gmail.com  
F-12230